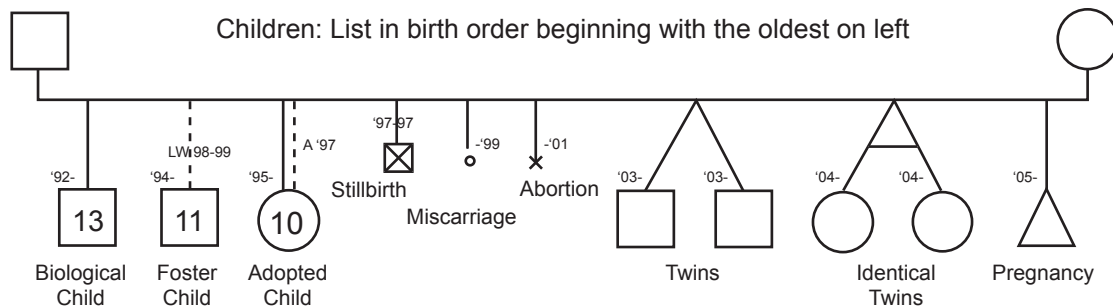
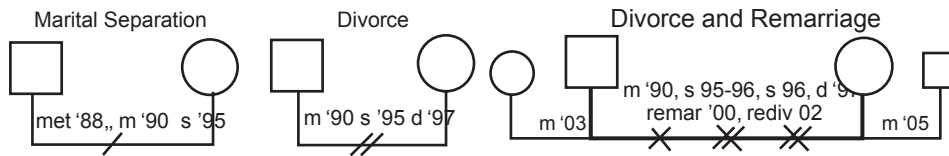
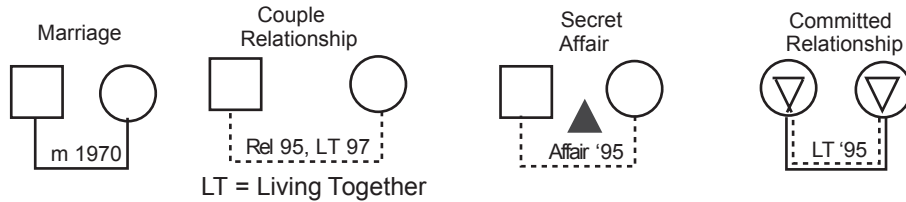
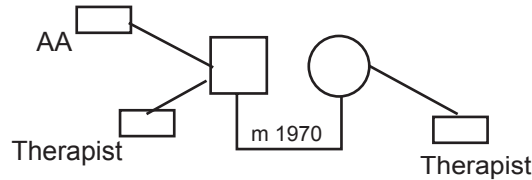
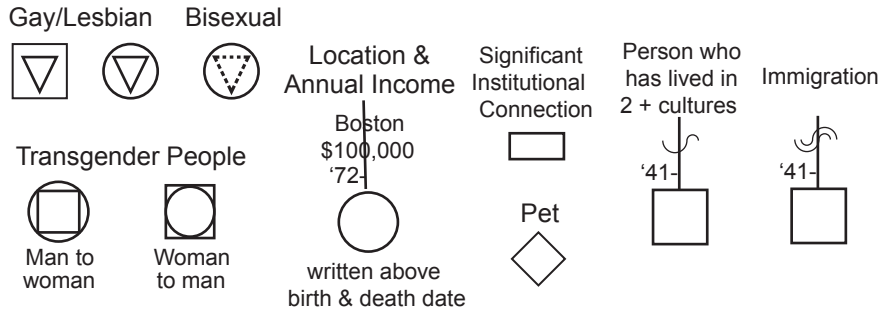
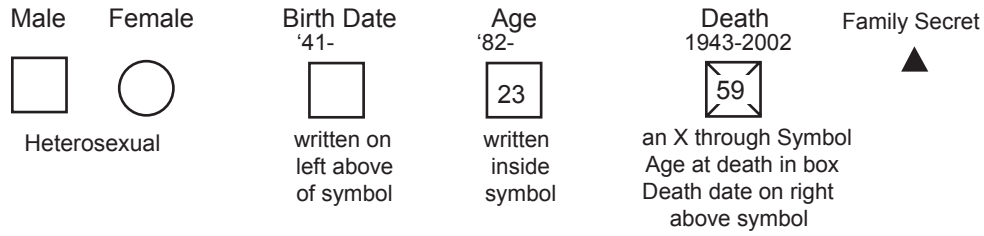
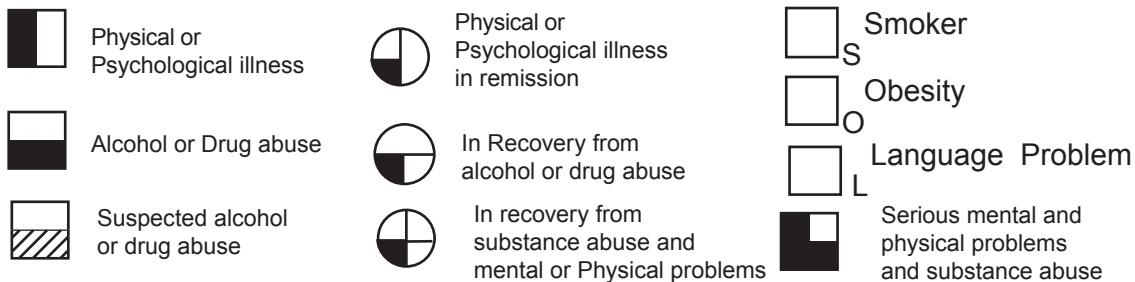




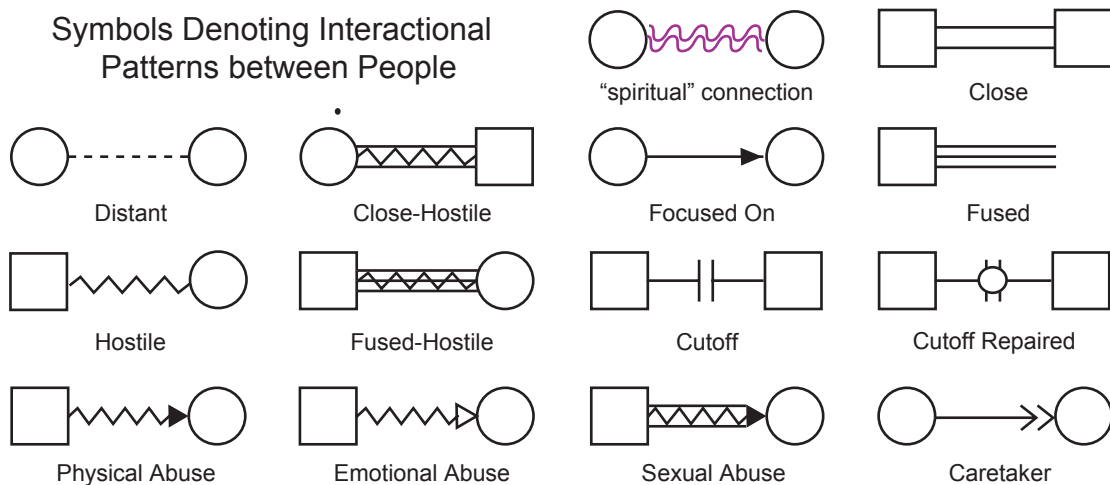
Standard Symbols for Genograms



Symbols Denoting Addiction, and Physical or Mental Illness




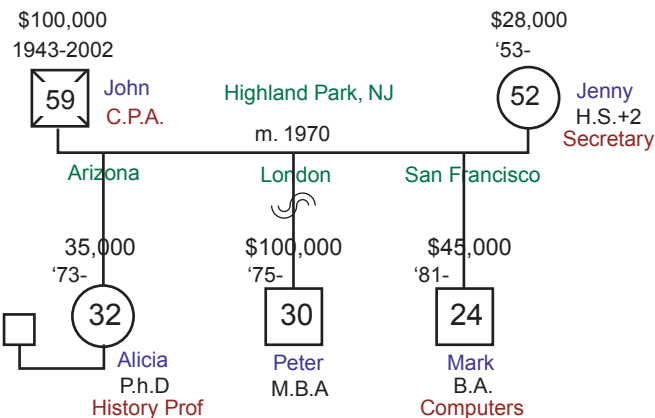
Symbols Denoting Interactional Patterns between People



Annual income is written just above the birth & death date.

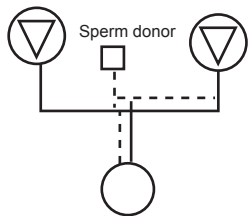
Typically you would include the person's occupation and education near the name and the person's whereabouts at the top of the line connecting to the symbol.

Symbol for Immigration = 

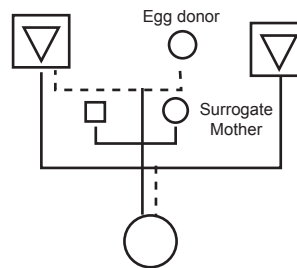


Artificial Insemination

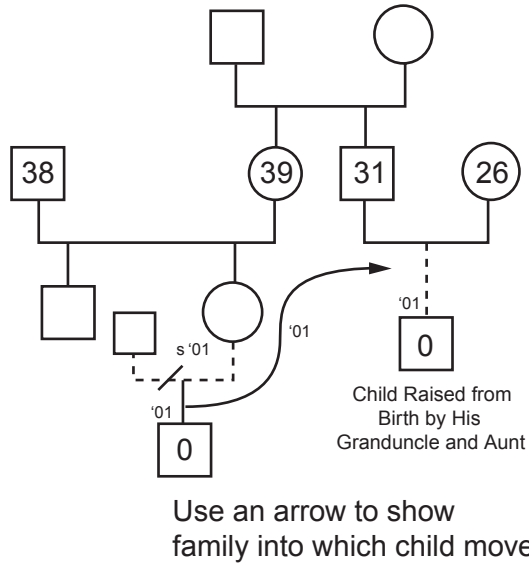
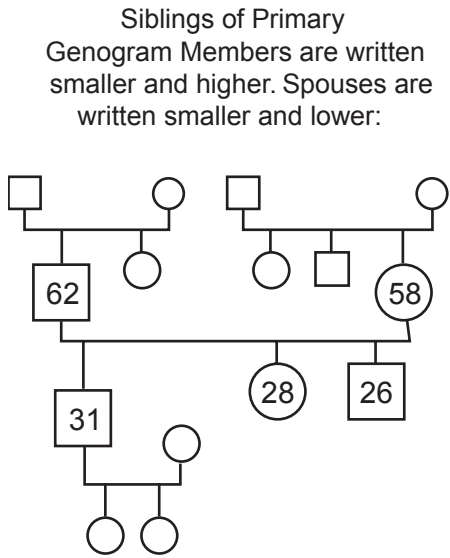
Lesbian couple whose daughter was conceived with egg of one partner and sperm donor.



Gay Couple whose daughter was conceived with sperm of John and an egg donor, and carried by surrogate mother till birth.

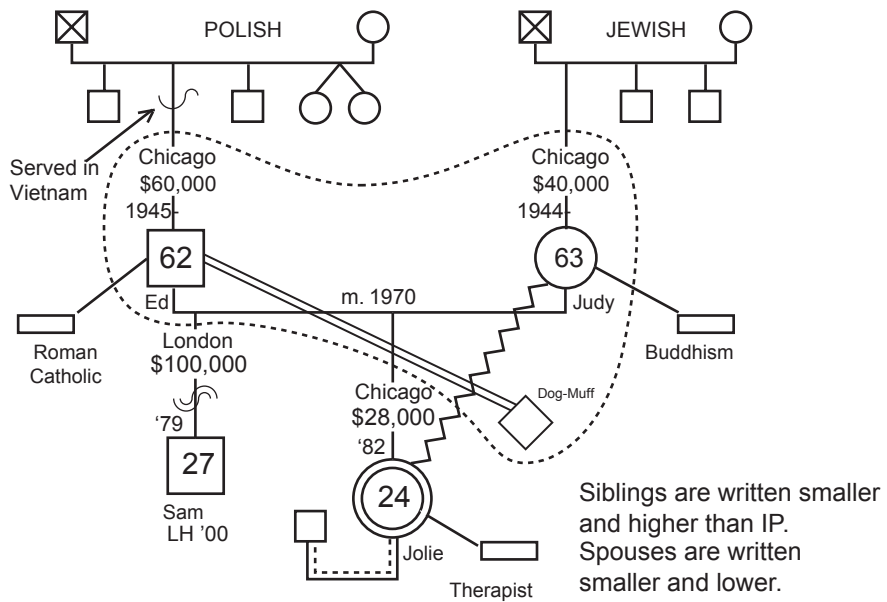


Foster Children

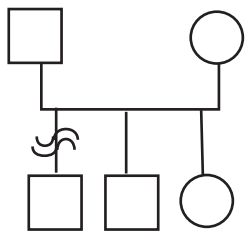


Household

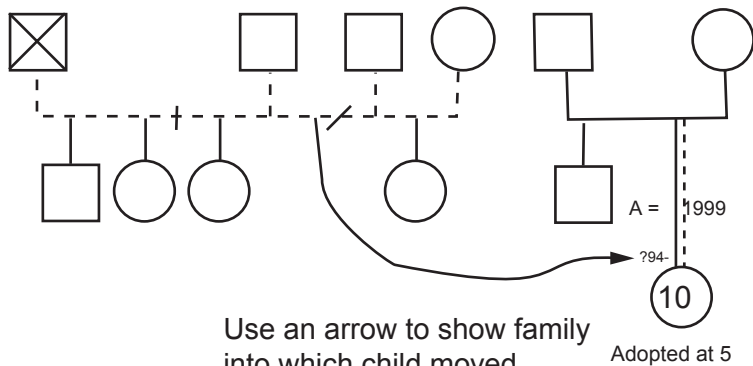
Household shown by encircling members living together (Couple living with their dog after launching Children)



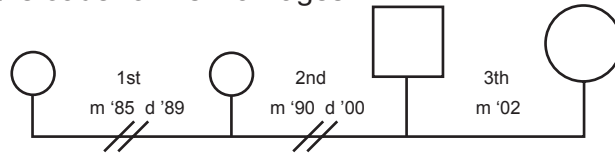
Symbol for Immigration



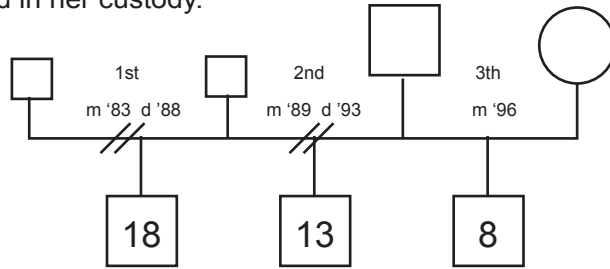
Adopted Child



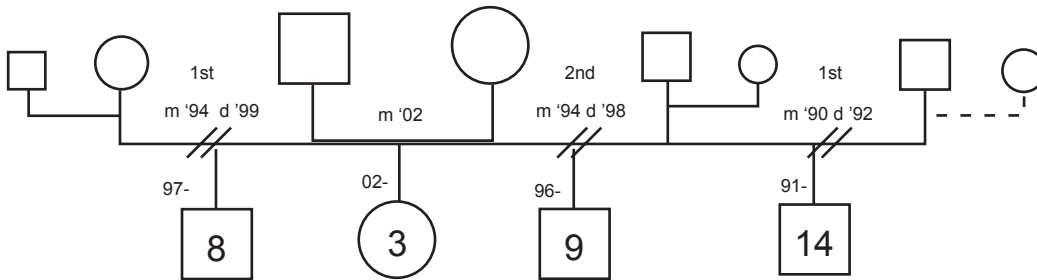
- 1 Husband, His Current Wife and his Ex-Wives (who are shown lower and smaller). Husband's wives may go on left to be closest to him. Indicators "1st," "2nd" etc. make clear the order of his marriages.



- 2 Wife, Her Current Husband and her Ex-Husbands (who are shown lower and smaller). Wife's previous relationships are shown on left to keep children in birth order, since they remained in her custody.



- 3 Couple with 3 year old, showing their previous spouses (smaller) and those spouses' new partners (even smaller)



- 4 Couple living with their joint child and her child from a previous relationship. The other spouses of the partners are shown smaller and lower on either side of the present household, indicated by a dotted line.

